



Lambda Philatelic Journal

Publication of the Gay and Lesbian History on Stamps Club

Vol. 15, No. 1

MARCH 1996

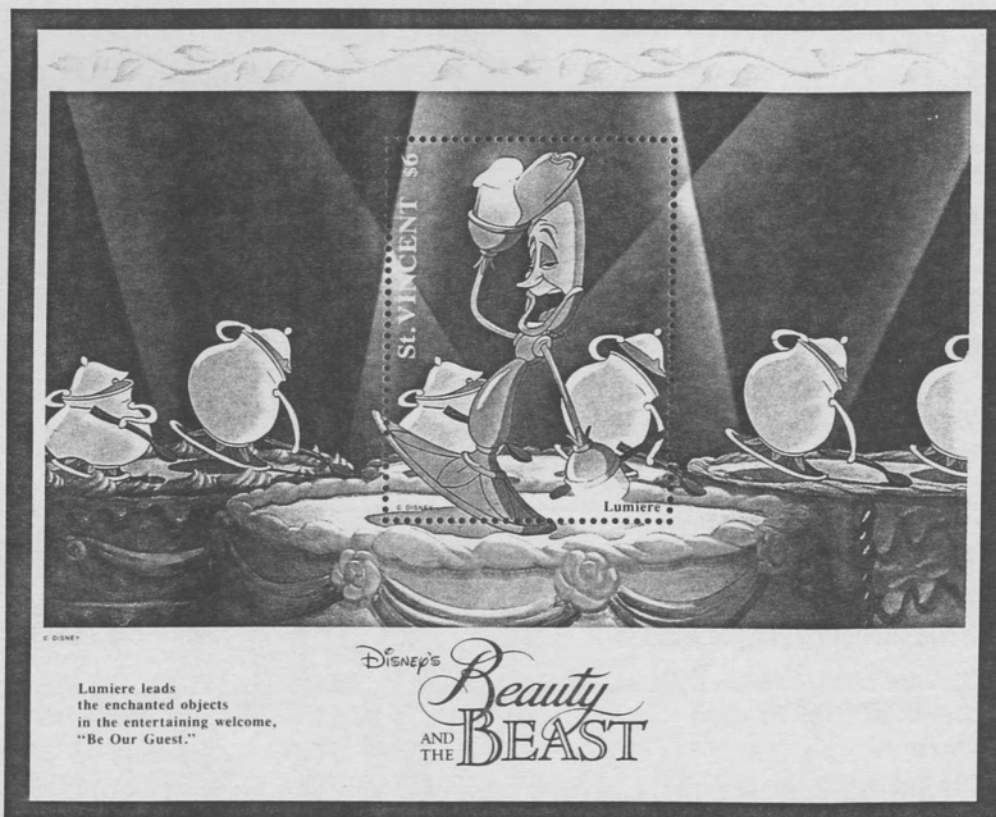
\$2.00

Motion Picture Centennial: A Gay and Lesbian Bonanza!!

See the Gay and Lesbian Update

Plus, Part I of the Disney Connection

See page 4



Scott no. 1776

The *Lambda Philatelic Journal* is published quarterly by the Gay and Lesbian History on Stamps Club (GLHSC). GLHSC is a study unit of the American Topical Association, Number 458, and an affiliate of the American Philatelic Society, Number 205. GLHSC is also a member of the American First Day Cover Society, Number 72.

The objectives of GLHSC are to promote and foster an interest in the collection, study and dissemination of knowledge of worldwide philatelic material that depicts:

- λ notable men and women and their contributions to society for whom historical evidence exists of homosexual or bisexual orientation,
- λ mythology, historical events and ideas significant in the history of gay culture,
- λ flora and fauna scientifically proven to having prominent homosexual behavior, and
- λ even though emphasis is placed on the above aspects of stamp collecting, GLHSC strongly encourages other philatelic endeavors.

MEMBERSHIP:

Yearly dues are \$8.00 per year for U.S., Canadian and Mexican residents; \$10.00 or 12 IRC per year for all others (to help defray higher postage costs.) Dues are due and payable by the first of the quarter as listed on your mailing label. (196-A000 is due by January 1, 1996; 395-S000 is due by July 1, 1995.) Your help with this dues schedule will help keep the costs of mailing reminders to a minimum. Thank you.

MAILING ADDRESS:

Joe Petronie, Editor
PO Box 515981
Dallas TX 75251-5981
USA

CLUB OFFICERS:

President.....	Angela Watson*
Vice President.....	Brian Lanter
Secretary.....	Vacant
Treasurer.....	Judith Beckett
Editor.....	Joe Petronie

* - Temporary until nominations received, and elections held.

The *Lambda Philatelic Journal* thrives on philatelic articles, original or reprinted, and alternative viewpoints for publication. Members are also encouraged to place free advertisements of philatelic interest. The Editor reserves the right to edit all materials submitted for publication.

PUBLICATION DATE	ARTICLES NEEDED BY
March 16	February 23
June 15	May 17
September 21	August 24
December 14	November 15

The views expressed in the journal are those of the writers and do not necessarily represent those of the Club or its members. Any comments should be addressed to the Editor at the address listed.

News From the Editor

Ideal Solutions, Inc. is preparing a database for the Internet. They will be going on-line with hundreds of pages of philatelic information geared toward general and topical/thematic collectors. Topical collectors can use their search engine to ask for any name, event or topic in the database. There will also be an on-line directory with different philatelic clubs and organizations. If a browser is interested in a topic, they will view a list of related organizations that specialize in that topic. If any of you Internet users visit this site, please let me know of ways to improve the GLHSC page. You can visit GLHSC at <http://www.philatelly.com> on the Internet.

λ λ λ λ λ

The center section is the first membership directory for GLHSC. Much thanks to member Dick Byne for his help in making the much requested directory a reality. Several members asked that they not receive any approvals. Please be sure to abide by their wishes. The directory is being sent to members only. No organizations that receive the journal will receive a directory. Notify me of any errors, especially if you weren't listed and you would like your name included. Some handwriting is hard to read. I'll make corrections and additions in a supplement with the next journal. If you have any ideas on how to improve next year's directory, let me know. Only your input can help make it reflect your needs. Should the directory be updated before next year?

λ λ λ λ λ

I've heard from several members about going to Pacific 97 next year. The tentative date and time for our meeting is Saturday, May 31 at 4:00 PM. The last major GLHSC meeting was at World Stamp Expo 89 in Washington, DC. 1997 will mark the 15th anniversary of GLHSC. **ARE THERE ANY CACHET DESIGNERS OUT THERE WHO COULD POSSIBLY COME UP WITH ONE FOR THE CLUB TO USE DURING THE SHOW?**

λ λ λ λ λ

Thanks to all who have sent in articles. Please remember to send reproducible copies of stamps, covers, etc. to be used. Originals work best, and I will return them certified or registered if requested. If you could submit your articles on a 3.5" floppy, in Word 6.0 for Windows format, I would be eternally thankful!! The computer can read several formats, so if you don't have Word 6.0, a text format would suffice.

λ λ λ λ λ

I have finally transferred the *Lambda Philatelic Journal* index to the computer. It is in Excel 5.0 format. It currently runs about 15 pages, single sided. If you would like a copy, please send \$1 to cover the costs of printing and postage.

λ λ λ λ λ

I am hoping to have an ad for the Club in *Scott Stamp Monthly* by summer. Thanks to all who sent in additional money for this endeavor.

λ λ λ λ λ

The article on Howard Ashman and Disney (page 4) began as an article mainly on Howard Ashman. Unfortunately, I only had copies of his obituaries with which to work. It has evolved into a more Disney theme than strictly Howard Ashman.

Several of the latest Disney animated films have a strong gay connection. The next installment will explore this connection.

Membership Report

There are 116 active members and organizations in GLHSC. If any member has ideas on how to increase membership, please let me know.

Stamp Collecting is Fun!

The Disney Connection

Part I: Howard Ashman

Howard Ashman was born in Baltimore, Maryland in 1951. He received his education at Goddard College and Boston University. He received his Master of Fine Arts from Indiana University. He moved to New York in 1974. There, he became editor at Grosset & Dunlap while writing plays.

Ashman was artistic director of the Off-Off Broadway WPA Theatre from 1977 to 1982. His greatest success at WPA was his collaboration with Alan Menken, *Little Shop of Horrors*.

In 1989, Ashman and Menken shared the Academy Award for Best Song for "Under the Sea". "Under the Sea" is from the Disney movie *The Little Mermaid*. It is sung to a calypso beat by a crab who wants to persuade a lovelorn mermaid that it is better to live in the sea than on the land. In addition to the Oscar, their work on *Mermaid* also won them two Grammy Awards and a Golden Globe Award.

The Commonwealth of Dominica released a 10 stamp issue on August 6, 1991. The set, consisting of eight singles and two souvenir sheets, shows several scenes from *The Little Mermaid*.



Scott No. 1350

Howard Ashman died March 14, 1991 of complications from AIDS, eight months before the release of another of his successful collaborations with Alan Menken, *Beauty and the Beast*.

Beauty and the Beast is based upon Jean Cocteau's 1946 film of the same name. (This is the second version created by a gay man. In Cocteau's version, his lover, Jean Marais, portrayed the

Beast.) (See LPJ, Vol. 12, No. 2 for more on Jean Cocteau.) *Beauty* was the first animated film to be nominated for the Academy Award for Best Picture. It was also nominated for three of the five songs in the Best Song category. The film was dedicated to Hoard Ashman.

It was Ashman's idea to animate the household objects. He was considered a brilliant lyricist and an astute director. He continued work on *Beauty* up to his death. His companion of seven years, William Lauch, accepted the Oscar for Best Song for the song, *Beauty and the Beast*.



Scott no. 1774g

St. Vincent released two sets of stamps for *Beauty and the Beast*. The first set was issued December 15, 1992. It consisted of a miniature sheet of eight (Scott no. 1774j) and three souvenir sheets (Scott nos. 1776A-C).

The second set was issued in February 1993. It consisted of a set of six singles (Scott nos. 1768-73), a miniature sheet of nine (Scott no. 1774) and two souvenir sheets (Scott 1775-76). The singles set depicts scenes different than those depicted on the miniature sheet.



Scott no. 1774d

The next journal will explore another Disney film with several gay connections, *Aladdin*.

Yukio Mishima: Genius or Misguided Martyr?

by J. A. Christensen

Yukio Mishima, the Japanese novelist most widely known for his homosexual novels *Confessions of a Mask* and *Forbidden Colors*, was born in 1925. In 1931, he entered the Gakushuin (Peers School) (Japan, Scott no. 1525) from which he eventually graduated at the top of his class. His autobiographical novel, *Confessions of a Mask*, describes his growing awareness of his own homosexuality during his years at the school.



Gakushuin
Scott no 1525

In 1941, at the age of sixteen, he published his first work of fiction. In 1944, he entered Tokyo University, where he began the study of law at the insistence of his father. His interest in writing continued, however; and, in 1946, the Nobel Prize winning author, Yasunari Kawabata, agreed to sponsor him. Kawabata recommended that Mishima's short story, *Tabac*, about a homosexual relationship, be published in *Ningen*, a leading literary magazine. From that time on, Mishima devoted himself almost entirely to his writing -- to works which were all noted for their sensuality and sexuality.

He published *Kinkakuji* (*The Temple of the Gold Pavilion*) in 1956. It is based upon an actual event which had occurred six years earlier in Kyoto. This was considered to be his greatest work and established him, according to the critics, as "a literary genius."



Tokyo University
Scott no. 565



Kinkakuji
Scott no. 272

His final and most ambitious work was a tetralogy, *The Sea of Fertility*, the final section of which was completed and delivered to his publisher on the day of his death. In the first volume, *Silent Snow*, the heroine is said by some to be based upon Michiko Shoda, whom Mishima had once considered marrying. She did not, however, fulfill his strict requirements. She instead married Crown Prince Akihito. Today, she is the Empress of Japan.



Crown Prince Akihito and Princess Michiko
Scott no. 668

For a number of years, Mishima had developed an intense feeling of nationalism, desiring a return to the days of the samurai and to restore the Emperor to power. To this end, he raised a private army which he trained on the slopes of Mt. Fuji. On November 25, 1970, he decided his army was ready to put his plan into action. However, the plan was a total disaster. Mishima committed hara-kiri. His funeral at the Tsukiji Honganji temple in Tokyo was attended by over 10,000 people.



Mt. Fuji
Scott no. 931

The Freddie Mercury Collection

The Royal Mail purchased the Freddie Mercury stamp collection at Sotheby's auction in December, 1993. The lot contained Freddie's stamp album and thousands of his father's stamps. The proceeds from this auction went to the Mercury Phoenix Trust which is an AIDS charity set up by the surviving members of the rock group Queen.

Freddie Mercury was the lead singer in Queen. He was born September 5, 1946 in Zanzibar. His real name was Farookh Bulsara. He died on November 24, 1991 due to complications from AIDS. Upon his death, it was revealed that Freddie Mercury was bisexual.

During his preteen years, he collected stamps from around the world. His father was a diplomat who saved stamps for Freddie. He quit collecting stamps in his teens.

The Mercury collection is housed in a dark blue album. The album contains black pages with a white quadrille design. The stamps are arranged on each page by country.

Freddie prepared a layout for each page in an artistic fashion. The stamps are mounted symmetrically. The colors of the stamps chosen are pleasing to the eye. Several pages have gaps because he was waiting for stamps of the correct size, shape or color. For a boy of just twelve, this is quite an unusual arrangement.

The Freddie Mercury Collection is housed in the National Postal Museum located in the King Edward Building, King Edward Street, London, England. The Museum is open Monday through Friday, from 9:30 AM to 4:30 PM. Admission is free. The collection is not on permanent display. A request must be made to see the collection. The times available are 10:00 - 11:00 AM and 3:00 - 4:00 PM. You can receive a special certificate stating that you viewed and touched the Freddie Mercury Stamp Album.

There is also a set of four postcards that was printed in conjunction with this collection. Though the postcards can no longer be purchased from the Postal Museum, they can be purchased for 1 pound sterling from:

British Philatelic Bureau
20 Brandon Street
Edinburgh
EH3 5TT
Scotland

They go off sale on May 4, 1996. The credit cards Access and Mastercard are suggested for payment.

The postcards reproduced in this journal by courtesy of the National Postal Museum, London, England.



Gay & Lesbian Update

On October 7, 1995, Sweden Post Stamps issued a booklet of six stamps to commemorate 100 years of cinema. Two stamps are gay-related.

The middle stamp of the top row depicts a scene from *Sir Arne's Treasure*, 1919, Mauritz Stiller's silent movie based on Selma Lagerlöf's novel. Ms. Lagerlöf was a lesbian. Scott no. 2139.

The first stamp of the second row features Helena Bergström and Rikard Wolff in a scene from the 1992 film, *House of Angels*. Rikard Wolff, movie and theatre actor and singer, has publicly admitted to being gay. Scott no. 2141.



The cover of the booklet features the profile of Swedish actress Greta Garbo drawn by the artist Einar Nerman. (Scott no. for the complete booklet is 2143a.)

λ λ λ λ λ

Barbara Jordan, Texas congresswoman, died of viral pneumonia on January 17, 1996. For years, rumors existed in Texas that she was a lesbian. Upon her death, those rumors have been confirmed. Ms. Jordan first became involved in politics during 1960 as a volunteer for John F. Kennedy. In 1966, she was elected the first black woman to the Texas state senate. In 1972, she was elected to the US House of Representatives. She gained national attention during the debate on the impeachment proceedings of President Nixon. She resigned from Congress in 1978 and became a professor at the University of Texas at Austin. Copies of her Congressional free frank should be included in your gay and lesbian collection.

λ λ λ λ λ

Monaco issued a stamp on October 24, 1995 featuring the painting, *Springtime*, by Sandro Botticelli. It was printed in sheets of 10 stamps and 5 labels. Scott no. 1986.

λ λ λ λ λ

Mongolia issued a miniature sheet of 9 stamps for the 50th Anniversary of the United Nations. Dag Hammarskjöld is featured. Scott no. 2227b.

λ λ λ λ λ

Grenada Grenadines issued three miniature sheets of 9 stamps for the motion picture centennial. The actress sheetlet features Marlene Dietrich, Scott no. 1777b. It also features gay favorites Bette Davis, Elizabeth Taylor and Grace Kelly.

The romantic couples sheetlet features Nita Naldi and Rudolph Valentino* (1778a), Ramon Navarro* and Alice Terry (1778b) and Barbara Stanwyck* and Burt Lancaster (1778e).

The single stamp for couples features Greta Garbo* and John Gilbert, Scott no. 1780.

* Either gay, lesbian or bisexual.

λ λ λ λ λ



Recent meter used in England. "GMP" is the Gay Men's Press.

λ λ λ λ λ

The Gambia issued a sheetlet of nine stamps to commemorate the 100th anniversary of cinema on December 1, 1995. The nine stamps feature James Dean in scenes from his three movie and other aspects of his life. Scott nos. 1671a-i and 1672.

λ λ λ λ λ

The United States Postal Service will be issuing a stamp to honor actor James Dean in June, part of the "Legends of Hollywood" series. The format for the stamp will be similar to the Marilyn Monroe stamp. It will be printed in sheets of 20 stamps with a decorative selvage.

λ λ λ λ λ

Madagascar issued a set of 4 stamps for the 100th anniversary of cinema last year. James Dean is featured on one of the 140f values. The movie represented is *Rebel Without a Cause*. Scott no. 1295.

This issue exists in single stamps, a miniature sheet of 4 and souvenir sheets of 1.

λ λ λ λ λ

Antigua issued a set of stamps for the centennial of the Nobel Prize Fund establishment on November 8, 1995. One of the stamps depicts Dag Hammarskjöld. Scott no. 1946a.

λ λ λ λ λ

St. Vincent issued a stamp honoring Thomas Mann on October 2, 1995. Scott no. 2217g.

λ λ λ λ λ

Bulgaria issued six stamps for the motion picture centennial on October 16, 1995.

Marlene Dietrich and Marilyn Monroe are featured on one stamp, Scott no. 3891. Sophia Loren and Liza Minelli are featured on another. Liza is shown in a scene from *Cabaret*. *Cabaret* had a gay subplot. Scott no. 3893.

λ λ λ λ λ

Italy issued a set of four stamps on August 29, 1995 for the motion pictures centennial. One features Rudolph Valentino in *Son of the Sheik*. Scott no. 2049.

λ λ λ λ λ

Anguilla issued a set of four stamps in 1995 for the 50th anniversary of the United Nations. Dag Hammarskjöld is featured on one. Scott no. 929.

λ λ λ λ λ

Ghana issued a sheet of nine stamps for the motion picture centennial on 12/8/95. Rudolph Valentino and Greta Garbo are featured. Scott nos. 1849c and 1849e, respectively.

λ λ λ λ λ

Gibraltar issued two sheets of four stamps plus four labels for the motion picture centennial on 11/13/95. Marlene Dietrich and Laurence Olivier are featured. Scott nos. 696c and 696d, respectively.

λ λ λ λ λ

Tanzania issued a sheet of nine "Rock and Roll Stars" on 12/1/95. Elton John is among the stars. Scott no. 1414g.

Another sheet of nine issued the same day was one for the motion picture centennial. Ramon Navarro is featured. Scott no. 1416b.

λ λ λ λ λ

Cuba released a set of nine stamps for the motion picture centennial on 12/7/95. Marlene Dietrich (3690) and Greta Garbo (3693) are featured.

Please remember that the embargo of Cuban stamps, whether mint or used and from any country, is still in effect.

λ λ λ λ λ

The Danny Kaye stamp, as issued by Israel and mentioned in the last journal, has been given number 1253 by the Scott catalog.

λ λ λ λ λ

Madagascar issued a set of 20 stamps showing ancient art and architecture some time in 1994. One of the 525fr values shows a statue of Alexander the Great. Scott no. 1237.

Postmark used for the Freddie Mercury collection at the National Postal Museum in London. See page 6 for related story.



λ λ λ λ λ

Part of the Freddie Mercury collection will be in the Court of Honor at CAPEX 96. CAPEX 96 will be held in Toronto, Canada, June 8-16.

λ λ λ λ λ

The Cardinal Spellman Philatelic Museum reopened its library, post office and store on December 9, 1995. The gallery reopened January 7, 1996 with "Heroes of Our Heritage: An African American Tradition." The exhibit premiered at the Smithsonian Institution's National Museum of American History in 1992.

The Spellman museum had been closed for 15-16 months for major renovations. The museum is named for Cardinal Spellman, who was gay. Unfortunately, the Catholic Church hierarchy has consistently tried to hide this fact.

The museum is located at 235 Wellesley Street in Weston, Mass. Admission is free and open to the public.

AIDS Update

Phil Stager has been able to obtain several Rhode Island covers. They are \$3 each plus 55 cents for postage. You can order from Phil at:

4184 51st Ave., S.
St. Petersburg FL 33711-4734

The cachet features the same stick figure. However, he is holding the world instead of the AIDS ribbon. Printed in blue with a light green shading. Printed on legal envelopes.



λ λ λ λ λ

The Denmark postal service has announced that it will release an AIDS stamp on October 10, 1996.

λ λ λ λ λ

The Scott number for the Belgian AIDS stamp is B1125. This semi-postal stamp was the first to have a surtax for the fight against AIDS.

λ λ λ λ λ

SAN FRANCISCO IS.....PACIFIC 97

**A.I.D.S.
ON
STAMPS**

SPECIAL OFFER TO GLHSC MEMBERS

ON MAY 08, 1996 CANADA POST CORPORATION WILL RELEASE
ITS FIRST AIDS AWARENESS STAMP
which will commemorate the
Xlth International Conference on AIDS,
Vancouver, BC, July 07- 12, 1996.

The AIDS ON STAMPS Project
(responsible for a successful 4 year lobby for this issue!)
is making available to all GLHSC members the choice of:

- a) one *complimentary* mint Canadian AIDS stamp,
or
- b) one *complimentary* First Day Cover issue.

Simply send a SASE (#8 for stamp, #10 for FDC)
(Canadian postage rates:
United States = 52¢; International = 90¢)
to:

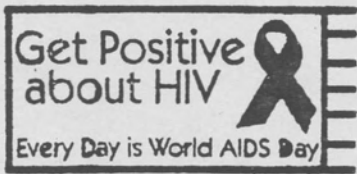
The AIDS ON STAMPS Project
PO Box 1652, Stn. A,
Vancouver, B.C., Canada
V6C 2P7

This FREE offer valid for requests postmarked
no later than **30 SEPTEMBER 1996.**

The Bahamas released a set of two stamps for World AIDS Day, December 1, 1995. The 25c value shows the virus in blood; the 75c value shows scientific research. Scott no. 847-48.

λ λ λ λ λ

There were several postmarks used in England around World AIDS Day 1995.



λ λ λ λ λ

Several South African cities were using ink jet markings late last year. The markings consist of the city, date and one of the two slogans, "PREVENT AIDS" and "VOORKOM VIGS".

λ λ λ λ λ

Artistamp produced by Mondo Post.



λ λ λ λ λ

The AIDS on Stamp checklist has been revised. It now includes Scott numbers and most Michel numbers. If you would like a copy, please send a self-addressed stamped envelope to the address on page 2.

Last Lick

Paul Hennefeld's collection, *Alternate Lifestyles: Out of the Closet*, won a vermeil award at the Postage Stamp Mega Event held in New York City February 22-25, 1996. Congratulations.

λ λ λ λ λ

Ed Centeno, former GLHSC President, attended the Northeast Regional Pride Coordinators (NERP) Conference in Queens, New York on March 2. The event was sponsored by the Queens Lesbian and Gay Pride Committee. He prepared a one frame exhibit of 12 different cachets affixed with various pride cancels. The display was quite popular, an outstanding fact since Ed was the only collector present!

Ed was able to pass out brochures explaining pictorial cancellations, how to obtain them and how to profit from them. The session was attended by representatives of pride committees throughout the US and members of national gay and lesbian organizations. Several representatives from Boston, Philadelphia, Long Island, Indianapolis and Maine expressed an interest in pursuing cancels for this year's events. The Philadelphia reps liked the idea so much, they may also try to have a cancellation for National Coming Out Week in October 1996!

Three cities have already obtained permission for cancellations: South Florida, San Francisco and Queens. Look for more information on these and other cancels in future editions of the *LPJ*.

λ λ λ λ λ

Stamp collecting: A Hobby of a Lifetime

STAMPSHOW 96, the annual convention of the American Philatelic Society, will be held August 22-25 at the Orange County Convention Center in Orlando, Florida. If any members would like to get together for an informal meeting, Phil Stager would be glad to coordinate it. Anyone interested, please contact Phil at:

4184 51st Ave., S.
St. Petersburg, FL 33711-4734

λ λ λ λ λ

TOPEX 96, the ATA show, will be held July 12-14 at the Medallion Hotel in Dallas. Any members that would like to meet, contact the editor. We can have an informal meeting at one of the many restaurants nearby.

λ λ λ λ λ

Below is an interesting cover that I received during the past year. The stamp designs are in blue, purple, red and gold.

